



CCDS

CROP CONDITION AND DEVELOPMENT STAGES

SEPTEMBER 29, 2022



DEPARTAMENT & REGIONS

CROP ANALYST

Ing. Martin López
martinlopez@bc.org.ar

CROP ANALYST

Ing. Daniela A. Venturino
dventurino@bc.org.ar

CROP ANALYST

Ing. Andrés Paterniti
apaterniti@bc.org.ar

CROP SURVEY & ANALYSIS OF CROP CONDITION AND DEVELOPMENT STAGES

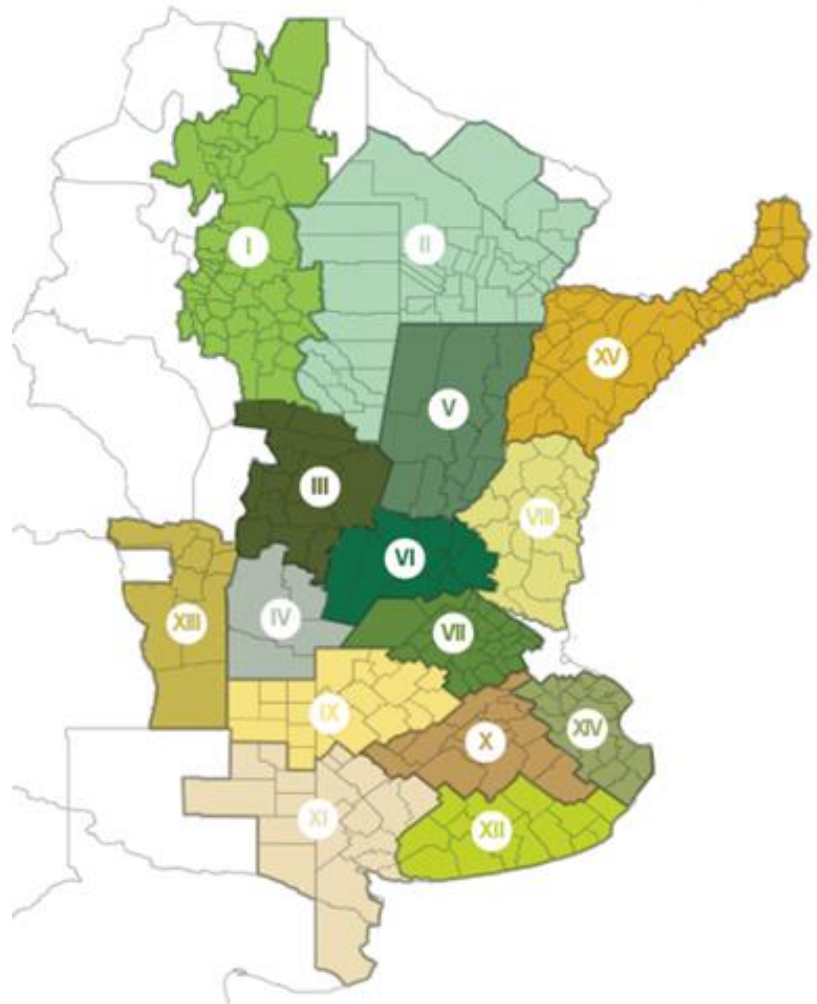
Joaquín Pellejero
jpellejero@bc.org.ar

Agustín Podestá
apodesta@bc.org.ar

CONTACT

Av. Corrientes 123
 C1043AAB - CABA
 Tel.: +54 11 3221 7230
 estimacionesagricolas@bc.org.ar
 Twitter: @BolsadeC_ETyM
 www.bolsadecereales.com

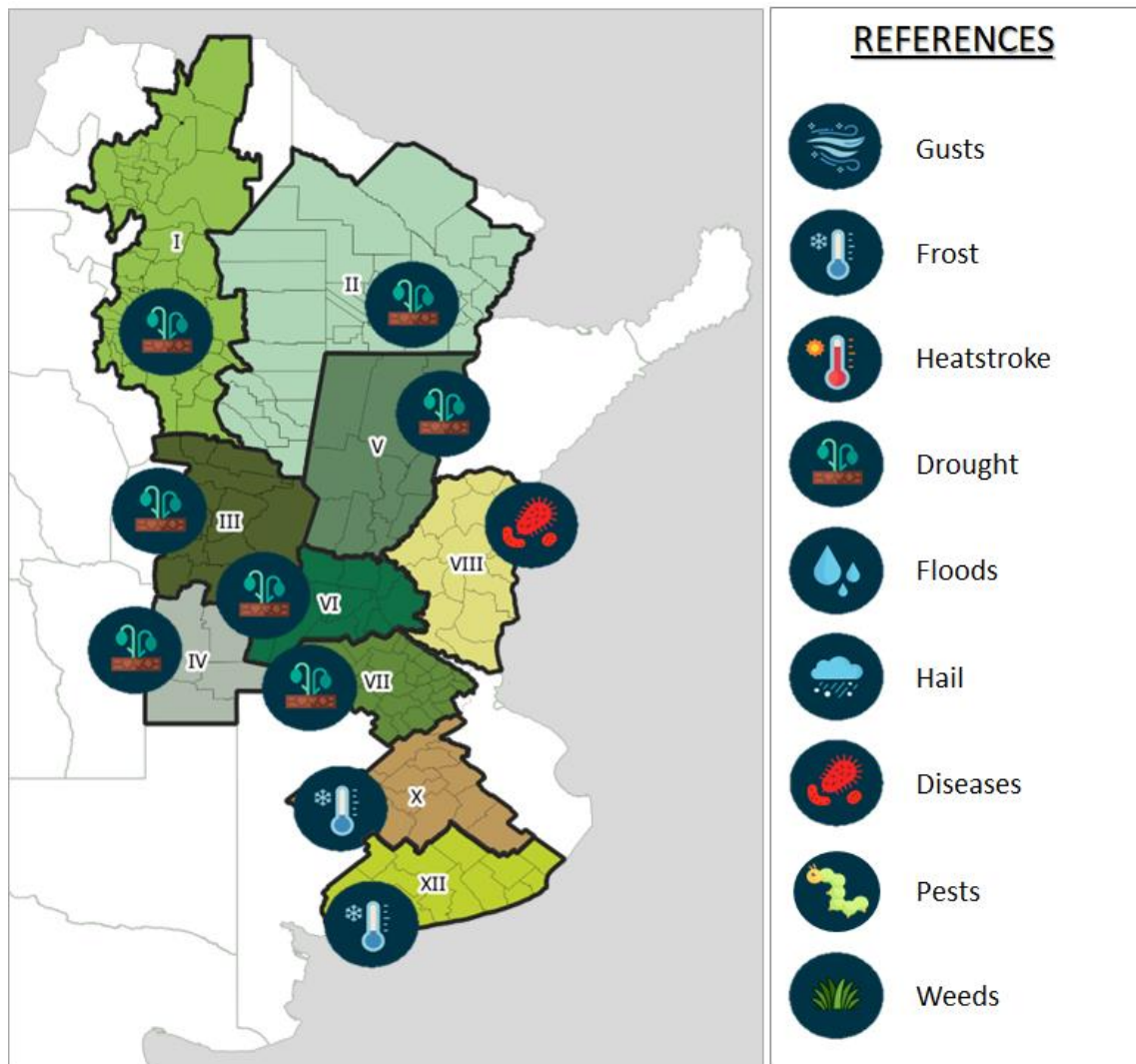
ISSN 2408-4344t



- | | |
|---------------------------------|--------------------------------------------------|
| I - NWA (North-West Argentina) | IX - North La Pampa - West Buenos Aires |
| II - NEA (North-East Argentina) | X - Central Buenos Aires |
| III - North-Central Córdoba | XI - South-West de Buenos Aires - South La Pampa |
| IV - South Córdoba | XII - South-East Buenos Aires |
| V - North-Central Santa Fe | XIII - San Luis |
| VI - North Belt | XIV - Cuenca del Salado |
| VII - South Belt | XV - Others |
| VIII - East-Central Entre Ríos | |

We appreciate the contribution of our Network of Collaborators throughout the country.

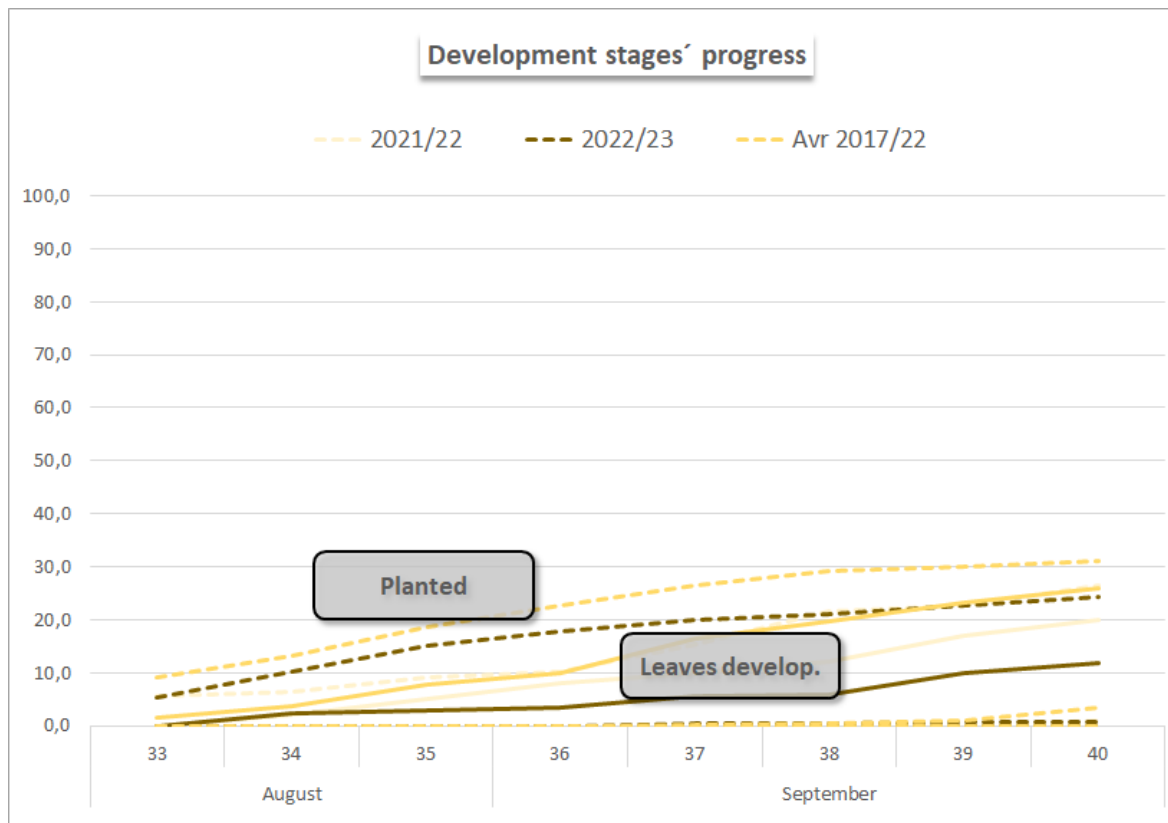
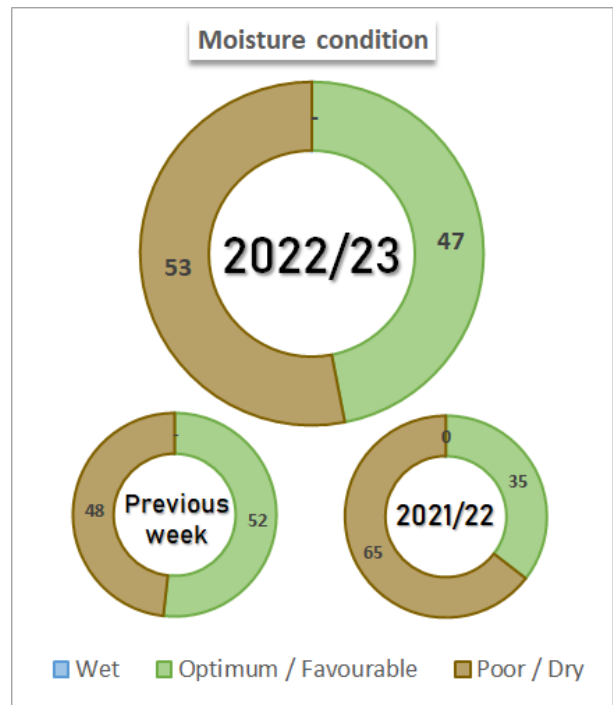
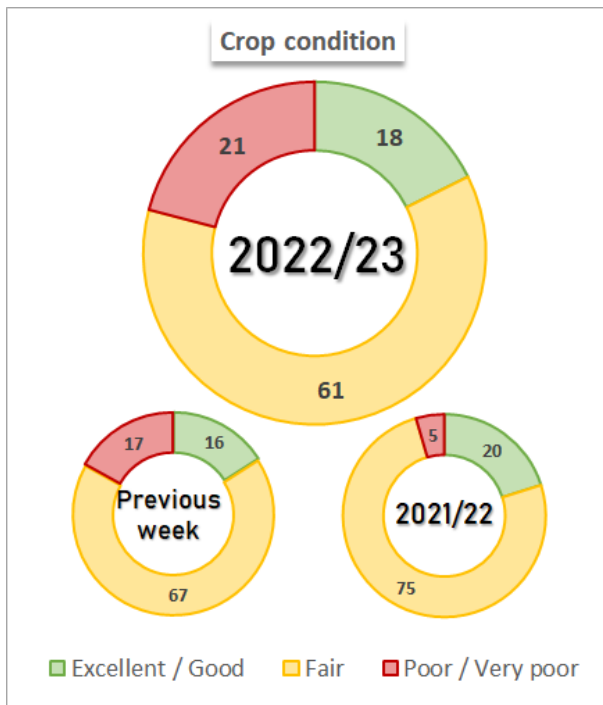
RECENT ADVERSE EVENTS



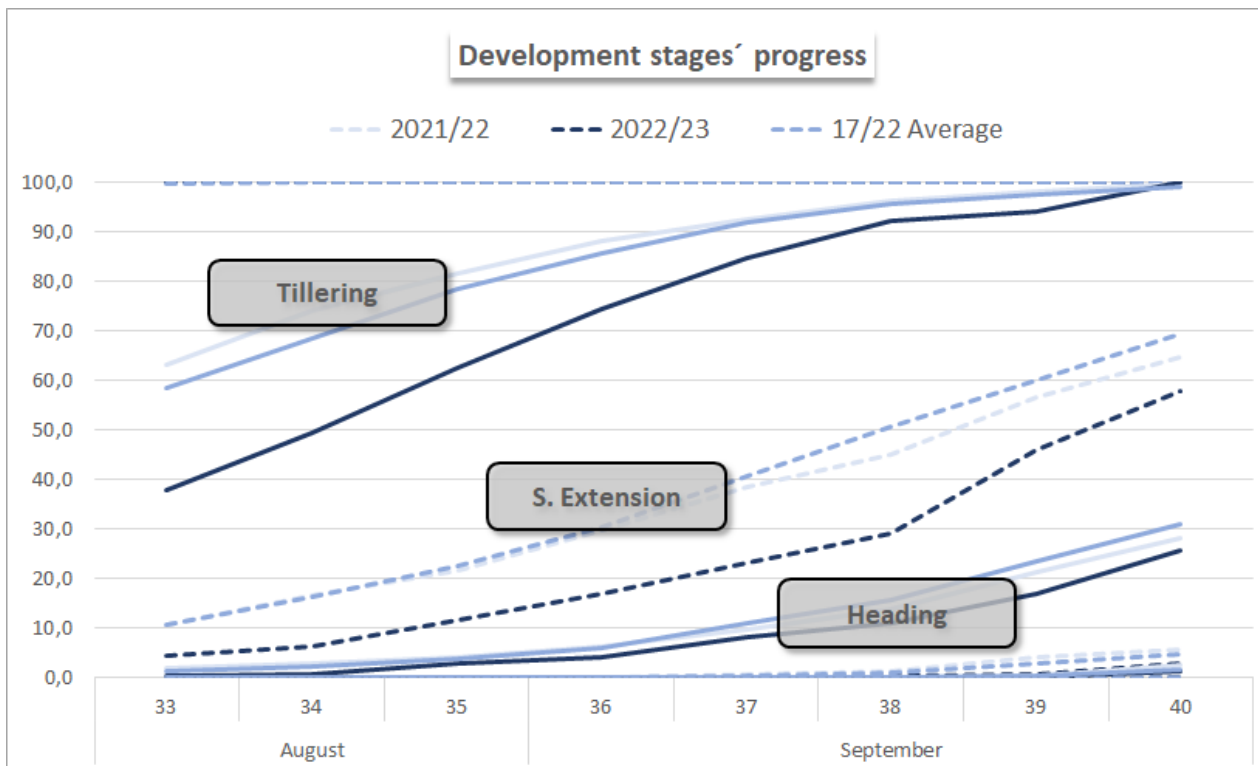
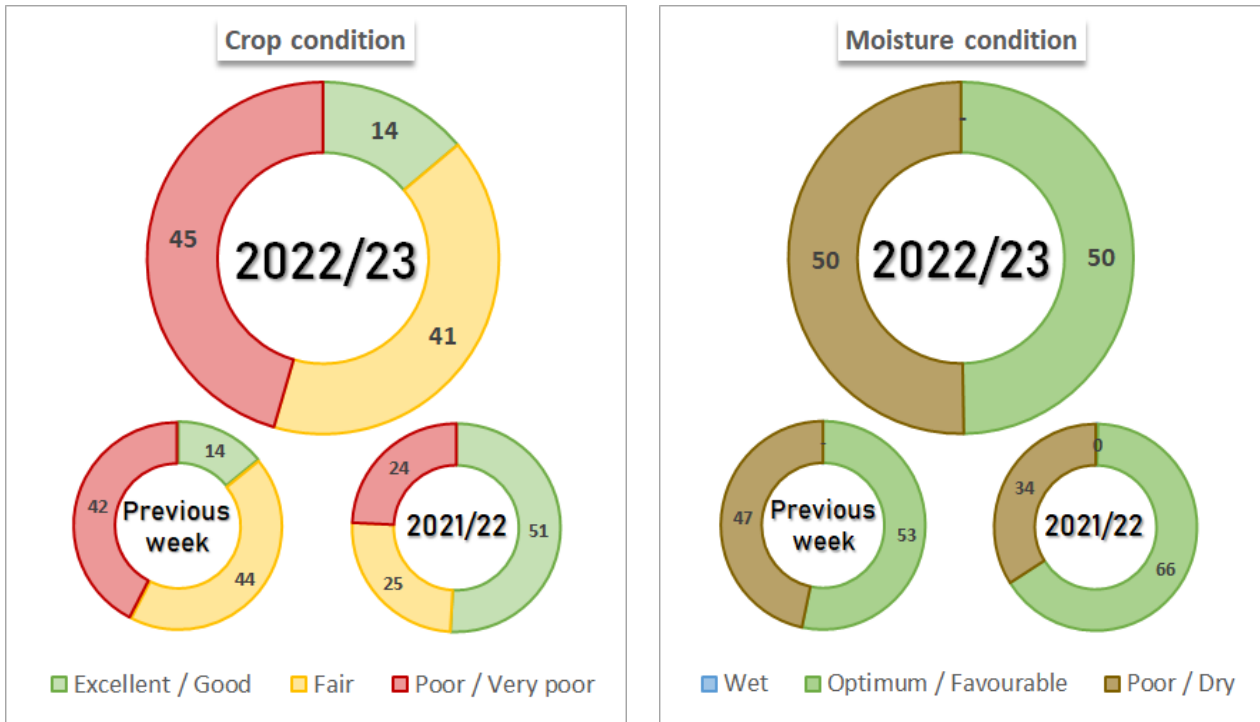
METHODOLOGY

Findings of the survey conducted through September 28, 2022. The areas under analysis in this report account for 90% of the crops planted area. The regional development data is published once planting is complete. The national planting and harvest progress, as well as the phenological data of the crops derive from the final area projection, while the moisture and crop condition derive from the planting progress to

SUNFLOWER 2022/23



WHEAT 2022/23



Regional participation in the total national area (%)															
Regions	XII	VI	VII	XI	IX	V	II	III	VIII	X	IV	I	XIV	XV	XIII
Nat. Part. 2022/23	13,5	12,6	12,1	11,0	9,6	7,2	6,9	5,4	6,8	6,4	4,4	3,0	0,8	0,4	0,2
Hist. Nat. Part.	10,4	13,3	10,0	9,2	8,3	7,6	6,9	9,3	5,1	5,5	6,2	6,2	1,6	0,3	0,2
Moisture condition, Crop condition & Development stages														Week 40	
Regions	Adverse event	Season	Moisture Condition Favourable / Optimum	Crop Condition Fair / Excellent	Planted	Tillering	Steam Extension	Heading	Ripening	Mature	Harvested				
I - NWA	Drought	22/23	3,0	4,0	100,0	100,0	100,0	100,0	42,0	20,0	-				
		21/22	-	-	100,0	100,0	100,0	100,0	54,0	22,0	2,1				
		17/22 Average	-	-	100,0	100,0	100,0	99,4	45,6	17,2	0,4				
II - NEA	Drought	22/23	16,0	6,0	100,0	100,0	100,0	100,0	20,0	10,0	-				
		21/22	5,0	-	100,0	100,0	100,0	86,0	37,0	18,0	-				
		17/22 Average	-	-	100,0	100,0	100,0	80,6	27,0	6,4	-				
III - NC Cba	Drought	22/23	13,0	10,0	100,0	100,0	86,0	37,0	-	-	-				
		21/22	-	11,0	100,0	100,0	81,0	41,0	-	-	-				
		17/22 Average	-	-	100,0	100,0	89,6	42,0	-	-	-				
IV - S Cba	Drought	22/23	33,0	29,0	100,0	100,0	61,0	27,0	-	-	-				
		21/22	30,0	64,0	100,0	100,0	94,0	30,0	-	-	-				
		17/22 Average	-	-	100,0	100,0	84,4	28,0	-	-	-				
V - NC S Fe	Drought	22/23	44,0	38,0	100,0	100,0	89,0	53,0	-	-	-				
		21/22	55,0	60,0	100,0	100,0	88,0	42,0	1,0	-	-				
		17/22 Average	-	-	100,0	100,0	93,4	51,2	2,4	-	-				
VI - North Belt	Drought	22/23	29,0	23,0	100,0	100,0	69,0	26,0	-	-	-				
		21/22	77,0	100,0	100,0	100,0	70,0	30,0	-	-	-				
		17/22 Average	-	-	100,0	100,0	84,0	36,2	-	-	-				
VII - South Belt	Drought	22/23	25,0	27,0	100,0	100,0	63,0	21,0	-	-	-				
		21/22	90,0	100,0	100,0	100,0	62,0	22,0	-	-	-				
		17/22 Average	-	-	100,0	100,0	70,6	23,2	-	-	-				
IX - N LP - W BA		22/23	63,0	74,0	100,0	100,0	39,0	6,0	-	-	-				
		21/22	93,0	100,0	100,0	100,0	51,0	14,0	-	-	-				
		17/22 Average	-	-	100,0	100,0	50,6	7,8	-	-	-				
X - Central BA	Frost	22/23	70,0	91,0	100,0	100,0	40,0	-	-	-	-				
		21/22	95,0	100,0	100,0	100,0	53,0	-	-	-	-				
		17/22 Average	-	-	100,0	100,0	44,0	5,0	-	-	-				
XI - SW BA - S LP		22/23	73,0	85,0	100,0	100,0	23,0	-	-	-	-				
		21/22	91,0	100,0	100,0	96,0	31,0	-	-	-	-				
		17/22 Average	-	-	100,0	94,6	31,6	0,8	-	-	-				
XII - SE BA	Frost	22/23	88,0	97,0	100,0	100,0	22,0	-	-	-	-				
		21/22	100,0	100,0	100,0	100,0	28,0	-	-	-	-				
		17/22 Average	-	-	100,0	96,2	31,6	3,2	-	-	-				
National		22/23	49,7	54,1	100,0	100,0	57,8	25,5	2,7	1,3	0,1				
		21/22	65,6	75,0	100,0	99,6	64,9	28,2	5,6	2,4	0,1				
		17/22 Average	-	-	100,0	99,1	69,3	31,1	4,8	1,5	0,0				